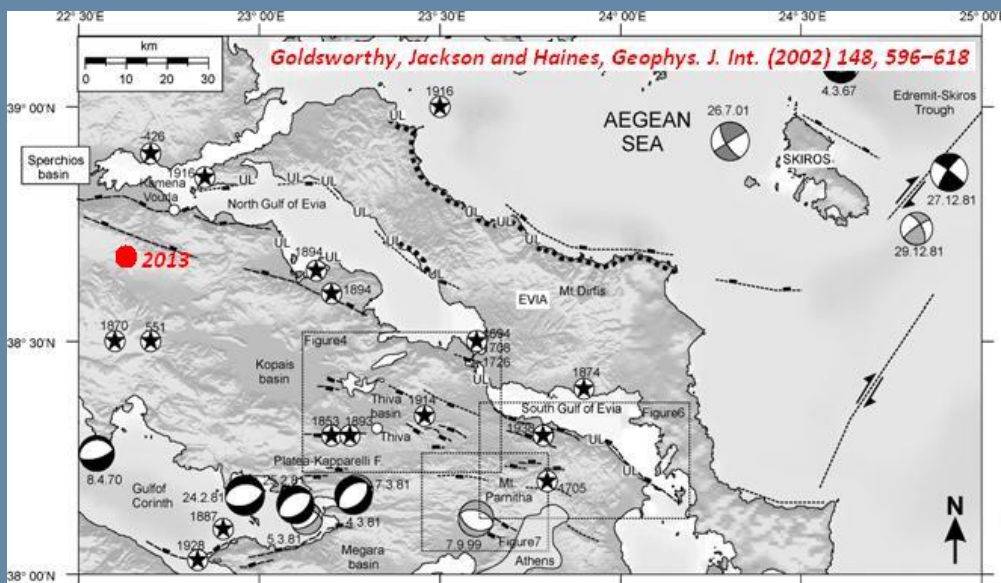




Δρ. ΑΘΑΝ. ΓΚΑΝΑΣ Δρ. ΧΑΡ. ΚΡΑΝΗΣ
Δρ. ΕΜ. ΣΚΟΥΡΤΣΟΣ Δρ. ΕΥΘ. ΛΕΚΚΑΣ

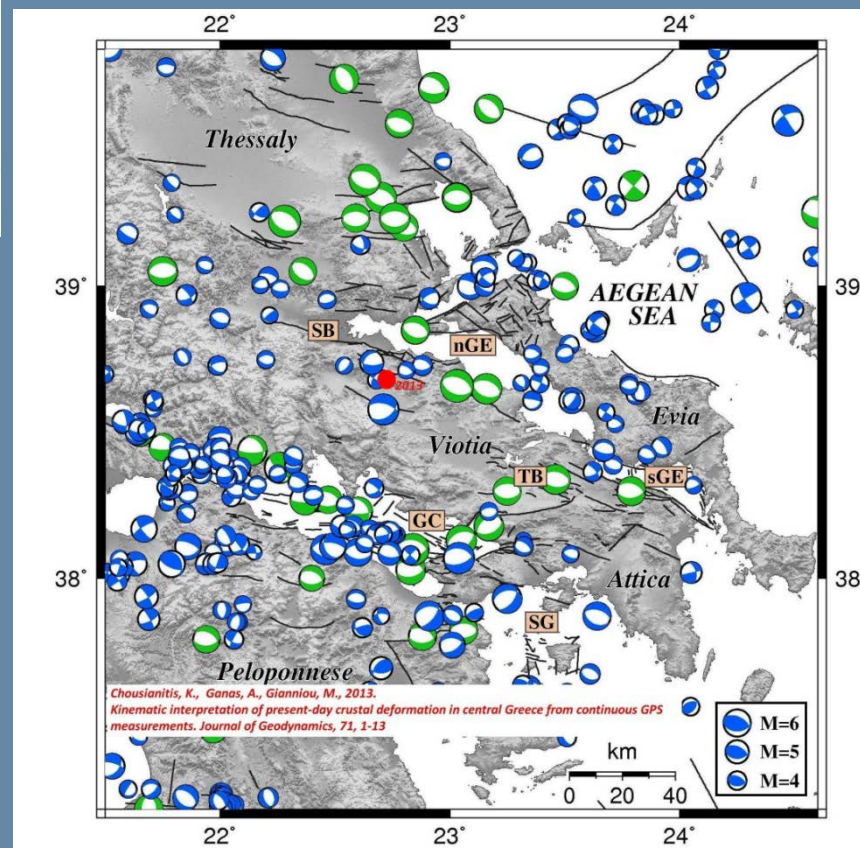
ΣΕΙΣΜΟΣ ΚΑΛΛΙΔΡΟΜΟΥ 7 ΑΥΓ 2013

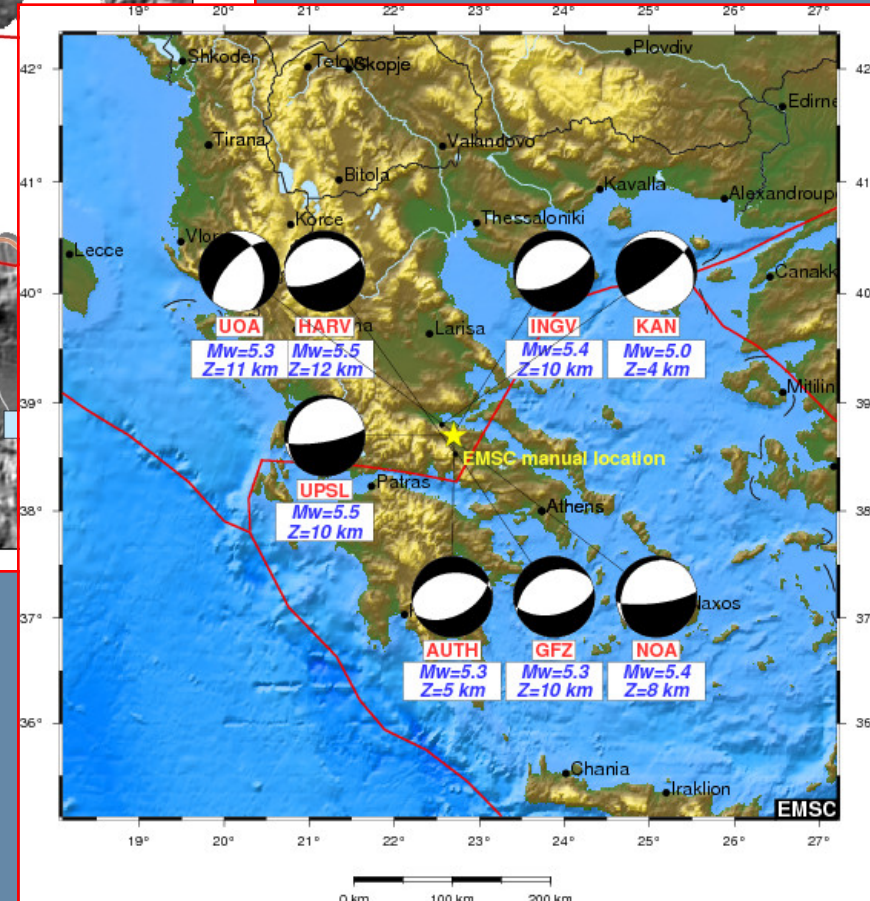
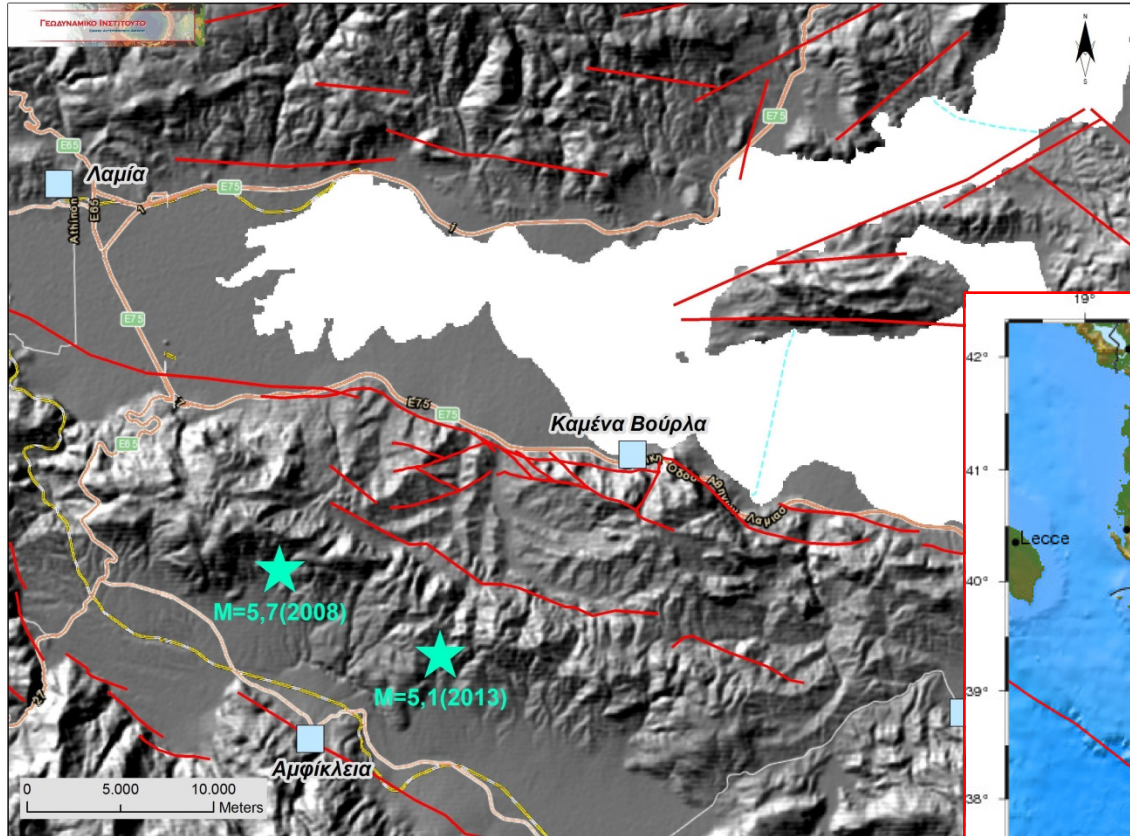
ΑΘΗΝΑ ΑΥΓΟΥΣΤΟΣ 2013



Χάρτης μεγάλων ιστορικών – σύγχρονων σεισμών

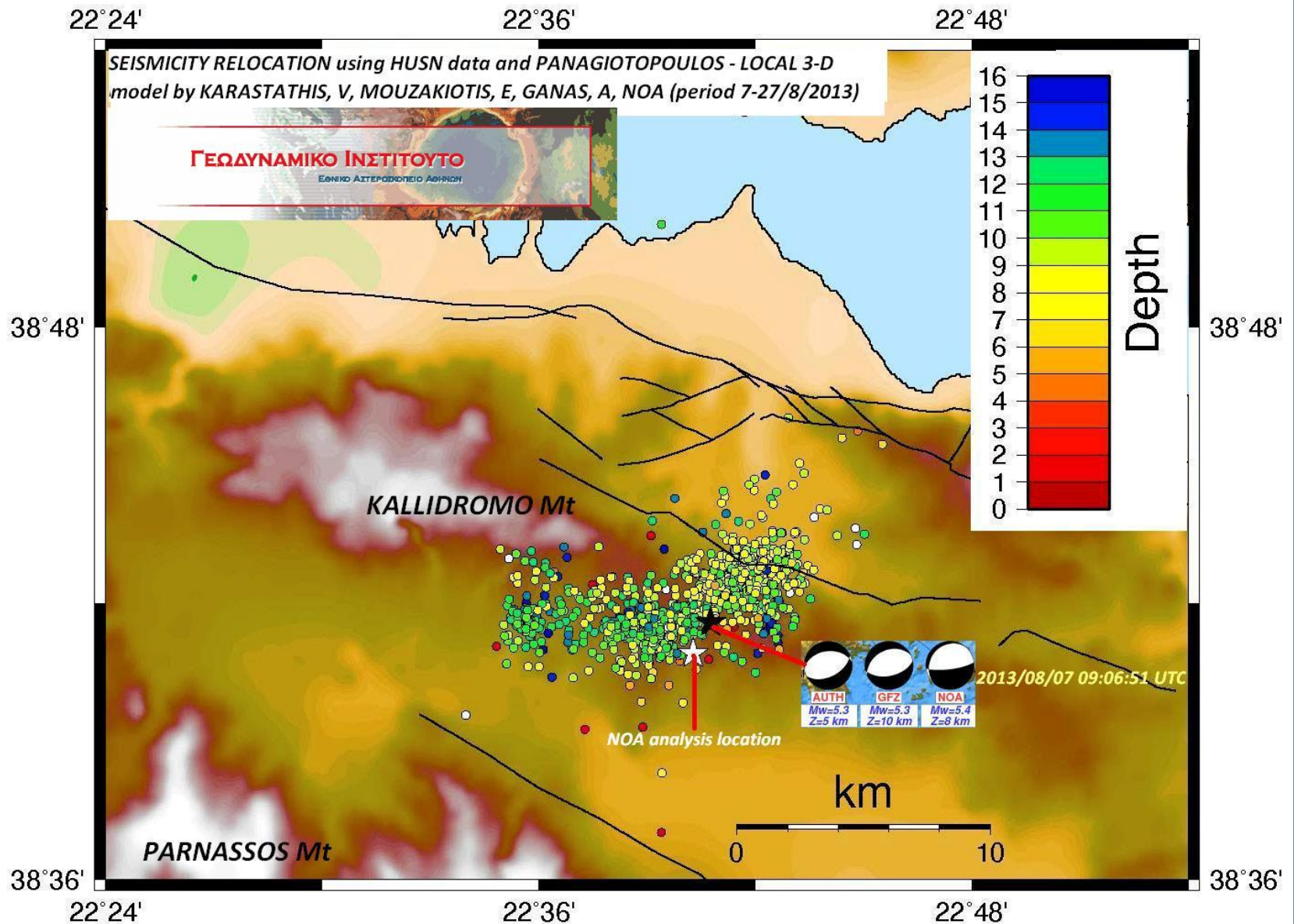
Χάρτης μηχανισμών γένεσης (Βάση δεδομένων: Ambraseys and Jackson (1990) Papadimitriou and Karakostas (2003), CMT Catalogue (1976–2005; $M_w > 5$) and from the NOA MT (Moment Tensor) Catalogue (2006–2013))





Χάρτης μεγάλων νεοτεκτονικών ρηγμάτων

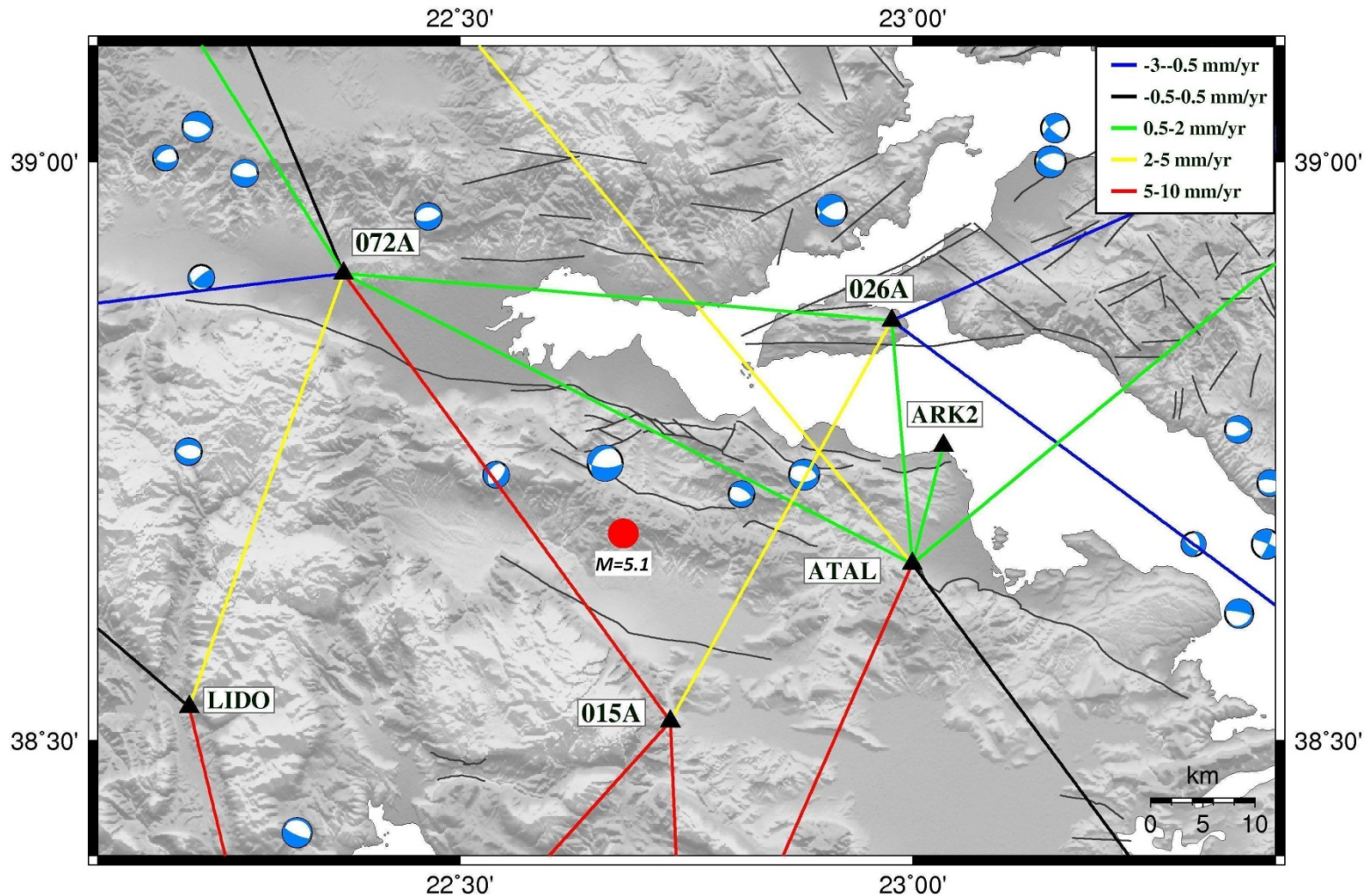
Μηχανισμοί Γένεσης 7/8/13





Χάρτης μεταβολών γραμμών βάσης GPS

Chousianitis K., Ganas A., Gianniu M., Journal of Geodynamics 71 (2013) 1–13, Kinematic interpretation of present-day crustal deformation in central Greece from continuous GPS measurements



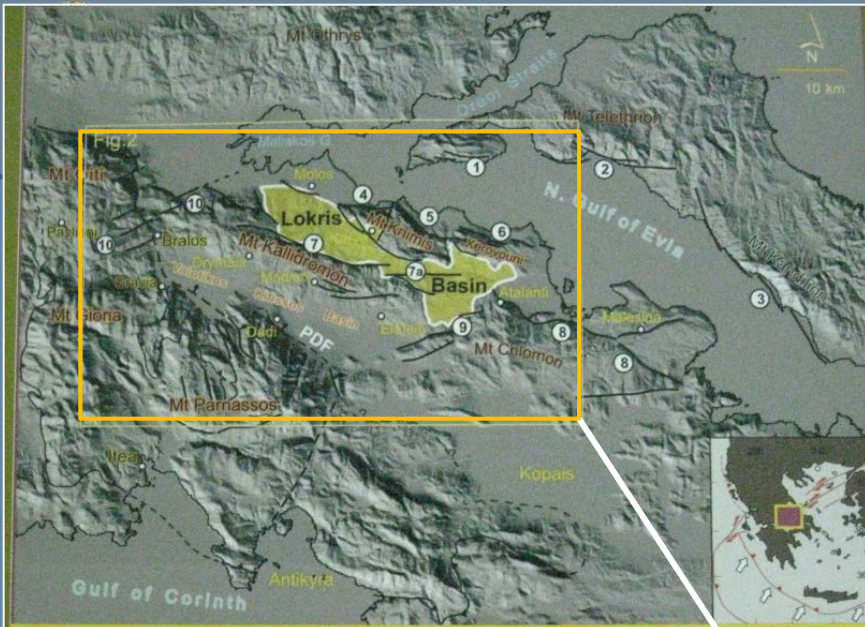


Figure 1. Hillshaded relief of central-eastern mainland Greece. PDF: Parnassos Detachment Fault; 1: Lichas Fault Zone; 2: Telethron FZ; 3: Kandilion FZ; 4: Kamena Vourla FZ; 5: Agios Konstantinos FZ; 6: Arkitsa Longos FZ; 7: Kallidromon GZ; 8: Atalanti FZ; 9: Bralos-Oiti FZ

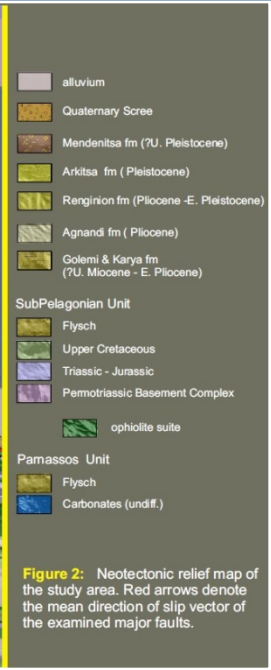
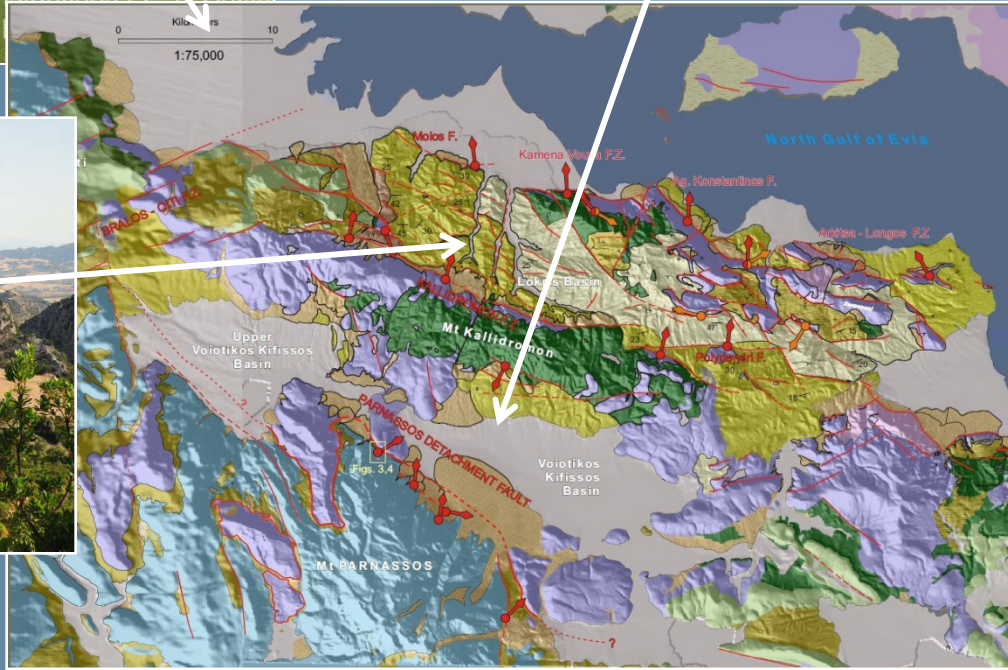


Figure 2: Neotectonic relief map of the study area. Red arrows denote the mean direction of slip vector of the examined major faults.

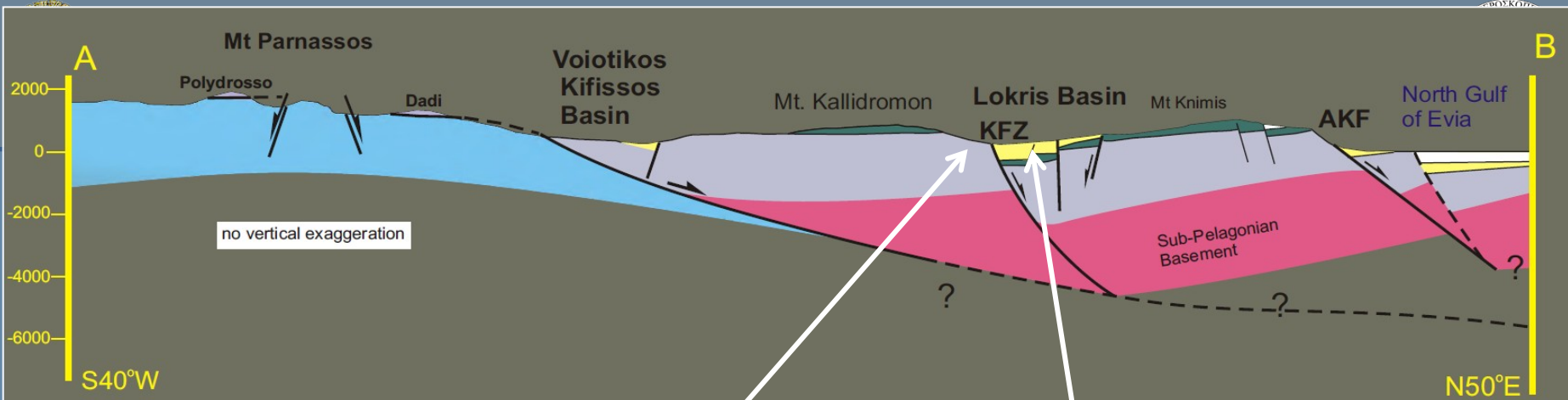


Figure 5: Schematic cross-section across the Voiotikos Kifissos and Lokris Basins. The formation of both VKB and LB is attributed to the NE-ward sliding on the PDF. The section also demonstrates the block rotation of Mt Knimis, resulting in the low dips of the AKF and the rotation - but to a lesser degree- of Mt Kallidromon, evidenced both by topography and the systematic southward lowering of the base of the ophiolite nappes.





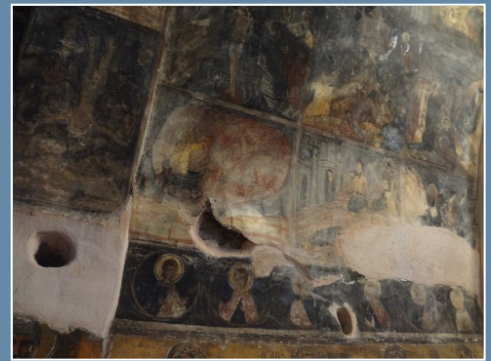
Απόψεις ζημιών στο δημοτικό σχολείο Δρυμαίας





Απόψεις ζημιών στον Ιερό Ναό Μενδενίτσας





**Απόψεις ζημιών στον
Ιερό Ναό Παναγίας Ρεγγινίου**









Δρ. ΑΘΑΝ. ΓΚΑΝΑΣ Δρ. ΧΑΡ. ΚΡΑΝΗΣ
Δρ. ΕΜ. ΣΚΟΥΡΤΣΟΣ Δρ. ΕΥΘ. ΛΕΚΚΑΣ

ΣΕΙΣΜΟΣ ΚΑΛΛΙΔΡΟΜΟΥ 7 ΑΥΓ 2013

ΑΘΗΝΑ ΑΥΓΟΥΣΤΟΣ 2013